

Broadstone Lakeside

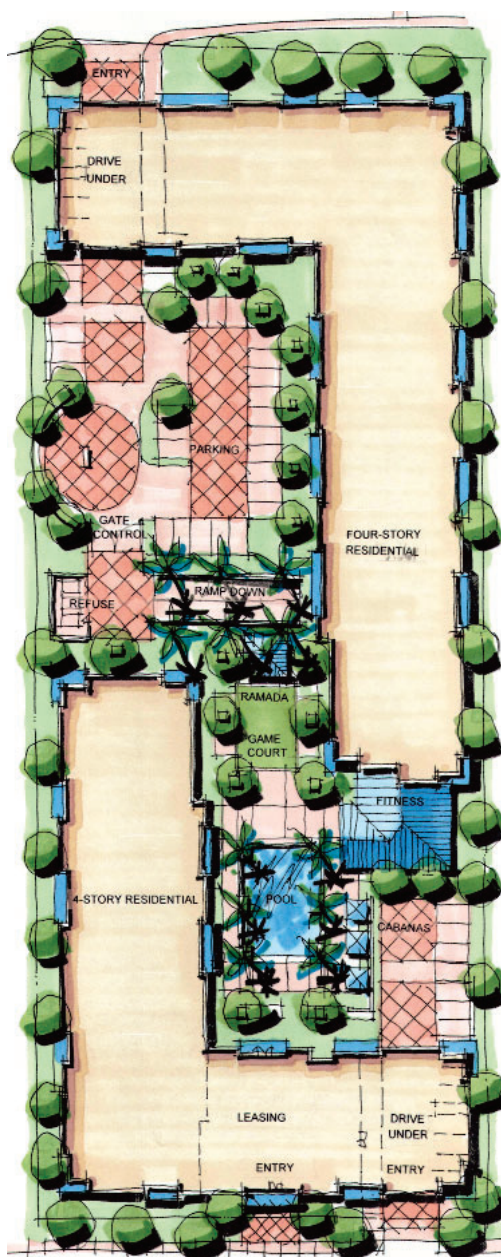


Broadstone Lakeside is a multi-family apartment community located in Tempe, Arizona. This 4 story complex is designed to provide a luxury rental housing community, in place of the current infill site. Two buildings rise out of a single base, providing underground parking, as well as courtyards along the ground level.

This 168 unit community features a wide range of living options, ranging from 672 sf to 2,407 sf, including live-work units on the ground floor.

This residential community provides retail on the ground floor, with close proximity to the light rail, allowing easy access to many shops, entertainment, and restaurants.

The site design, amenities and unit floor plans are based on recent experience developing luxury complexes in urban communities and in the Tempe area.



Client:

Alliance Residential Company

Contractor:

Alliance Residential Builders

Location:

Tempe, AZ

Design Team:

Architecture:
ORB Architecture, LLC

Landscape:
Collaborative V.

Structural Engineering:
Landa & Associates

Mechanical Engineering:
NP Mechanical

Electrical Engineering:
NP Electrical

Civil Engineering:
Kland Civil Engineers

Energy Consultant:
Quest Energy Group

Size:

2.98 Acres

156 Units

Services:

Site Planning
Design
Zoning Assistance
DRC Processing
Design Development
Construction Documents
Construction Administration

Amenities:

Luxury Fitness Center
Pool & Spa
Covered Ramadas & Pool House
Recessed Parking Garage
Co-Work Opportunities
Game Courts
Roof Top Recreation

