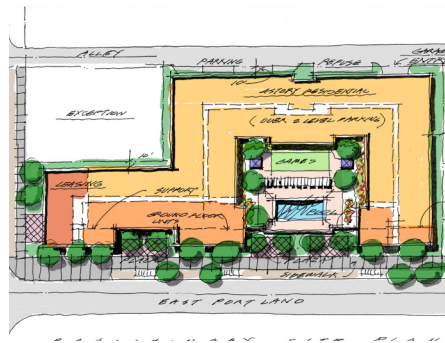


# Broadstone Portland



**Broadstone Portland** sits amidst the Arts & Entertainment district of downtown Phoenix, Arizona, located at the northeast corner of 3<sup>rd</sup> Street and Portland. This high-end residential project contains a clubhouse of the first floor with leasing and amenity space, as well as two-story fitness center that overlooks the resort style pool and spa. The upper floors host a variety of floor plans, including studios, one, two and three-bedroom units.

The 162-unit, four-story building sits on a 1.5 net acre site. The storefront area on the bottom floor creates an inviting pedestrian experience. Parking is provided with a three-story parking garage partially recess below grade. This desirable community is located near the Phoenix Light Rail, and the popular neighborhood that hosts “First Friday’s” art events.



## Client:

Alliance Residential Company

## Contractor:

Alliance Residential Builders

## Location:

Phoenix, AZ

## Design Team:

Architecture:  
ORB Architecture, LLC

Landscape:  
Collaborative V Design Studio, Inc.

Structural Engineering:  
Landa & Associates, Inc.

Mechanical Engineering:  
NP Mechanical

Electrical Engineering:  
NP Engineering, Inc.

Civil Engineering:  
SSI Consulting, LLC

Interior Design:  
Katie Bowe Design

**Size:**  
1.5 Acres  
161 Units

## Services:

Design  
Entitlement Processing  
Design Development  
Construction Documents  
Construction Administration

## Amenities:

Dog Park  
Fitness Center  
Resort Style Pool & Spa  
Clubhouse  
Bike Storage & Repair  
Rooftop Lounge

