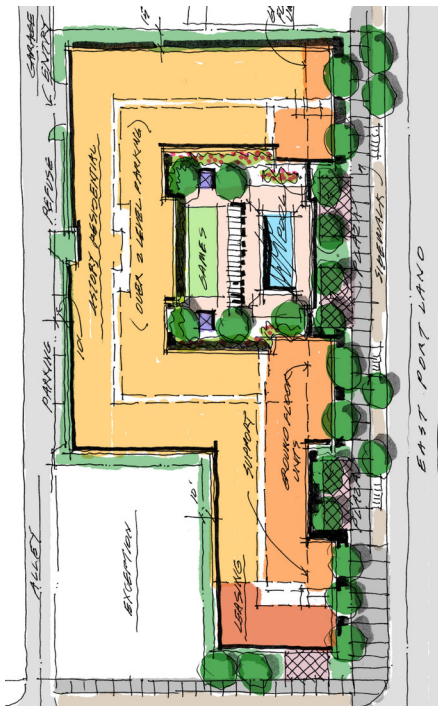


Broadstone Portland



Broadstone Portland sits amidst the Arts & Entertainment district of downtown Phoenix, Arizona, located at the northeast corner of 3rd Street and Portland. This high-end residential project contains a clubhouse at the first floor with leasing and amenity space, as well as a two-story fitness center that overlooks the resort style pool and spa. The upper floors host a variety of floor plans, including studios, one, two and three-bedroom units.

The 162-unit, four-story building sits on a 1.5 net acre site. The storefront area on the bottom floor creates an inviting pedestrian experience. A three-story parking garage partially recessed below grade provides parking to the residents. This desirable community is located near the Phoenix Light Rail, and the popular neighborhood that hosts “First Friday’s” art events.



Client:

Alliance Residential Company

Contractor:

Alliance Residential Builders

Location:

Phoenix, AZ

Design Team:

Architecture:
ORB Architecture, LLC

Landscape:
Collaborative V

Structural Engineering:
Landa & Associates

Mechanical Engineering:
NP Mechanical

Electrical Engineering:
NP Engineering

Civil Engineering:
SSI Consulting, LLC

Interior Design:
Katie Bowe Design

Size:
1.5 Acres
162 Units

Services:

Design
Entitlement Processing
Design Development
Construction Documents
Construction Administration

Amenities:

Dog Park
Fitness Center
Resort Style Pool & Spa
Clubhouse
Bike Storage & Repair
Rooftop Lounge

